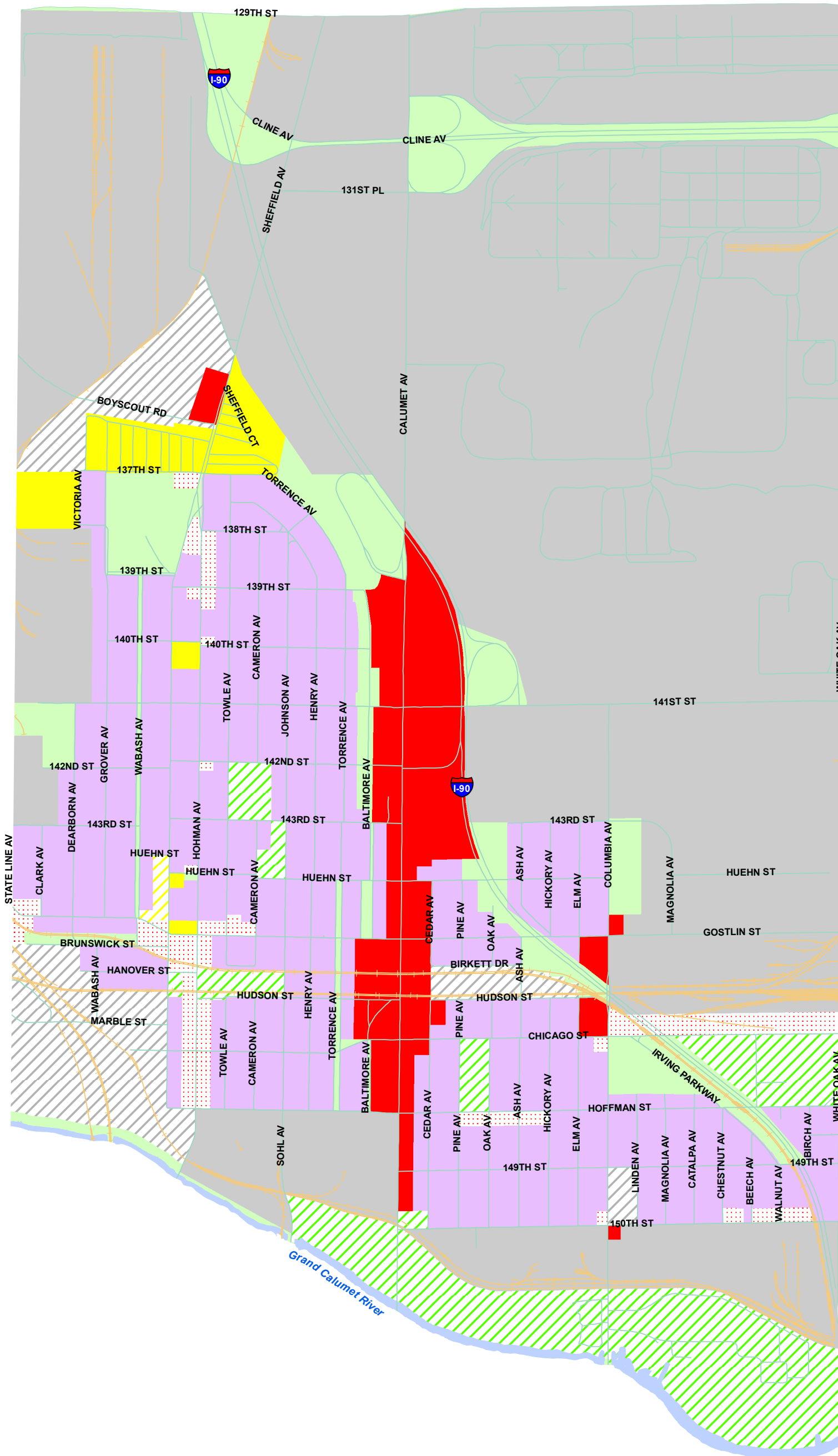


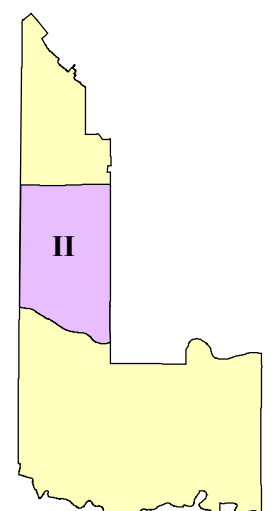


North Hammond Planning District II

Final Zoning Map Per Ordinance 8514



Zoning	
	R1
	R1-U
	R2
	R3
	R4
	C1
	C3
	C4
	I1
	I2
	S1
	S2
	PUD
	Street Centerlines
	Rail Centerlines
	Rivers & Lakes



Effective date October 21, 2003.
 Please note: This is not the official zoning map.
 The official zoning map is located in the Zoning
 Office, Room 135, at City Hall, Hammond, IN